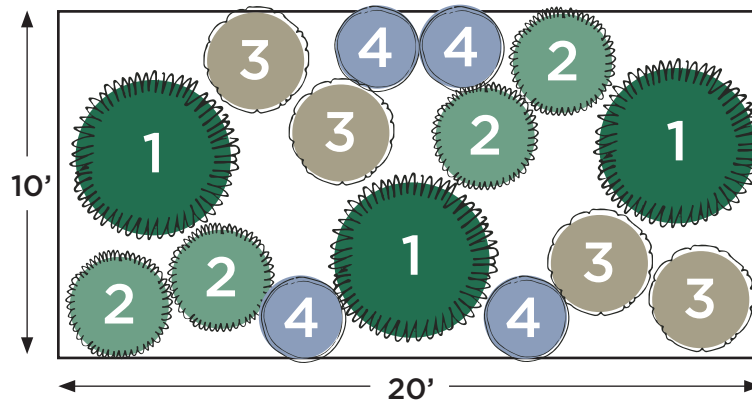


Plant by Numbers



Curb Appeal for Sun

Plant selections stay under 3 feet tall. Spacing shown is for fully grown plants. Click on plant names for more info on the species.



Large Perennial

Pick 1 species and buy 3 plants.



[Rosemary](#)



[Muhly Grass](#)



[Red Yucca](#)



Small Perennial

Buy 4 plants of this species.



[Autumn Sage](#)

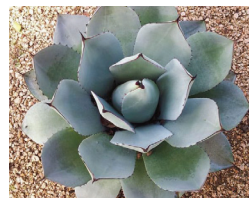


Small Perennial

Pick 1 species and buy 4 plants.



[Octopus Agave](#)



[Artichoke Agave](#)

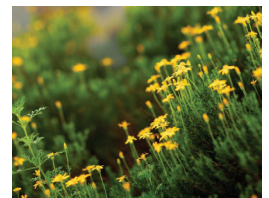


Low Growing

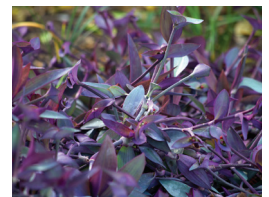
Pick 1 species and buy 4 plants.



[Frogfruit](#)



[Damianita](#)



[Purple Heart](#)

Want \$125 for these plants?

This design is eligible for one WaterSaver Landscape Coupon if you remove 200 square feet of grass. Apply today at GardenStyleSA.com/coupons for \$125 off the cost of 15 plants.

Quick Tips on Planting and Maintenance

Mulch 2 inches deep using 16 bags of 2-cubic-foot mulch.



Rosemary

- Prune to shape if desired.
- Appreciates occasional water.



Artichoke Agave

- Thorny tips can be snipped to minimize pokiness.
- No extra water needed.



Muhly Grass

- Cut back in late winter if desired.
- No extra water needed.



Frogfruit

- Can be mowed as desired.
- May brown in drought/frost.
- Appreciates occasional water.



Red Yucca

- Cut down faded flowers in late winter if desired.
- No extra water needed.



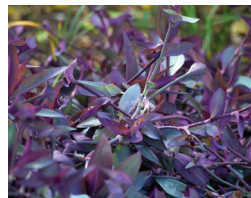
Damianita

- Light shaping as desired.
- No extra water needed.



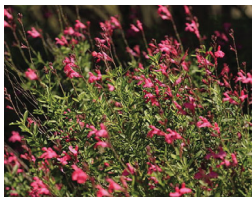
Octopus Agave

- Cut down faded flowers.
- Transplant pups, if desired.
- No extra water needed.



Purple Heart

- Spreads easily.
- Browns back in winter.
- Appreciates occasional water.



Autumn Sage

- Cut back old branches by 1/3 in spring or as needed.
- Appreciates occasional water.

Scan for gardening basics and how-to videos on planting, weeding and more!



Watering Countdown To Establish New Plants



Look for this icon for exceptional performance during exceptional drought!



No extra watering required.