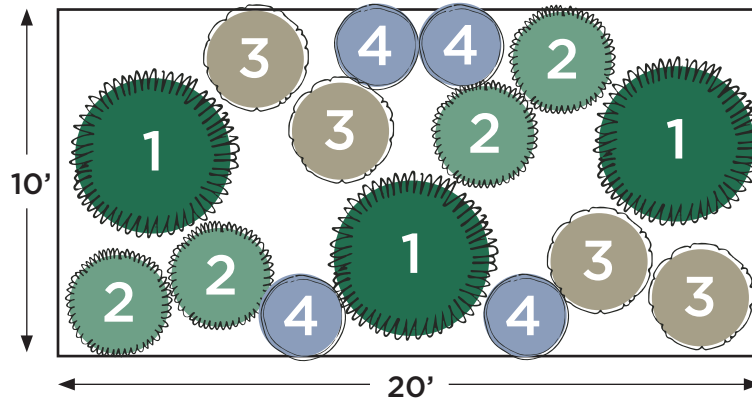


# Plant by Numbers



## Curb Appeal for Shade

Plant selections stay under 3 feet tall. Spacing shown is for fully grown plants. Click on plant names for more info on the species.



### Large Perennial

Pick 1 species and buy 3 plants.



[Flame Acanthus](#)



[Plumbago](#)



### Small Perennial

Buy 4 plants of this species.



[Inland Sea Oats](#)



### Small Perennial

Buy 4 plants of this species.



[Bicolor Iris](#)

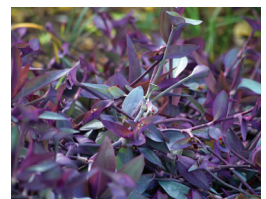


### Low Growing

Pick 1 species and buy 4 plants.



[Cedar Sage](#)



[Purple Heart](#)

## Want \$125 for these plants?

This design is eligible for one WaterSaver Landscape Coupon if you remove 200 square feet of grass. Apply today at [GardenStyleSA.com/coupons](http://GardenStyleSA.com/coupons) for \$125 off the cost of 15 plants.

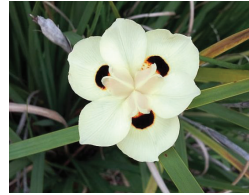
# Quick Tips on Planting and Maintenance

Mulch 2 inches deep using 16 bags of 2-cubic-foot mulch.



## Flame Acanthus

- Spreads easily.
- Cut back as needed.
- No extra water needed.



## Bicolor Iris

- Cut back in late winter if desired.
- No extra water needed.



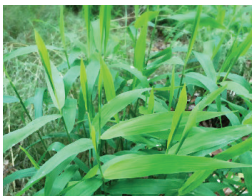
## Plumbago

- Cut back in late winter if desired.
- No extra water needed.



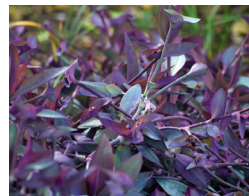
## Cedar Sage

- May brown in drought/frost.
- Delicate, no shaping needed.
- No extra water needed.



## Inland Sea Oats

- Cut back in late winter if desired.
- No extra water needed.



## Purple Heart

- Spreads easily.
- Cut back as needed.
- Browns back in winter.

## Watering Countdown To Establish New Plants



No extra watering required.



Look for this icon for exceptional performance during exceptional drought!

Scan for gardening basics and how-to videos on planting, weeding and more!

