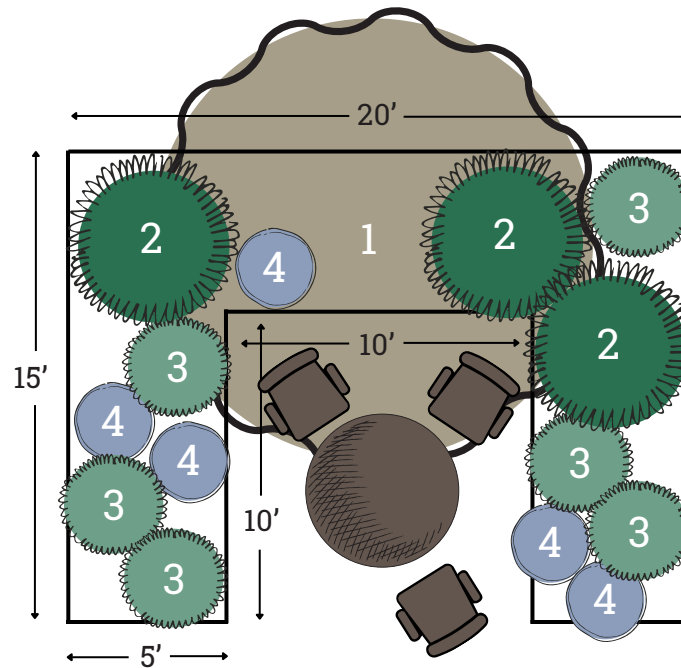


# Plant by Numbers



## Cottage Garden: Tea Nook for Shade

Plant selections create a whimsical garden with bountiful blooms. Spacing shown is for fully grown plants. Click on plant names for more info on the species.



### Small Tree

Pick 1 species and buy 1 plant.



[Redbud](#)

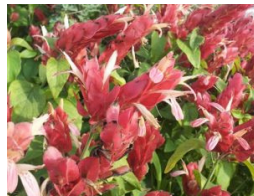


[Mexican Buckeye](#)



### Large Perennial

Pick 1 species and buy 3 plants.



[Shrimp Plant](#)

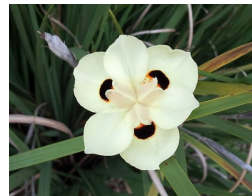


[Turk's Cap](#)



### Small Perennial

Pick 1 species and buy 6 plants.



[Bicolor Iris](#)



[Scarlet Sage](#)



### Low Growing

Pick 1 species and buy 5 plants.



[Cedar Sage](#)



[Purple Heart](#)

## Want \$125 for these plants?

This design is eligible for one WaterSaver Landscape Coupon if you remove 200 square feet of grass. Apply today at [GardenStyleSA.com/coupons](http://GardenStyleSA.com/coupons) for \$125 off the cost of 15 plants.



# Quick Tips on Maintenance

Mulch 2 inches deep using 16 bags of 2-cubic-foot wood mulch.



## Red Bud

- Edible flowers.
- Prune dead/diseased wood only.
- No extra watering required.



## Bicolor Iris

- Cut back in late winter if desired.
- No extra watering required.



## Mexican Buckeye

- Pruning is optional.
- Prune dead/diseased wood only.
- No extra watering required.



## Scarlet Sage

- Cut back as needed in early spring.
- Appreciates occasional water.



## Shrimp Plant

- Spreads easily.
- Cut back if desired in late winter.
- No extra watering required.



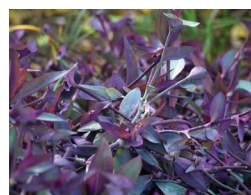
## Cedar Sage

- May brown in drought/frost.
- Delicate – no shaping needed.
- No extra watering required.



## Turk's Cap

- Edible flowers and fruits.
- Drops leaves in winter.
- No extra watering required.



## Purple Heart

- Spreads easily.
- Browns back in winter.
- Appreciates occasional water.

### Watering Countdown To Establish New Trees

- 3 times per week for 1st month.
- 2 times per week for 2nd month.
- 1 time per week for 3rd month.
- No extra watering required.

### Watering Countdown To Establish New Plants

- 3 times per week for 3 weeks.
- 2 times per week for 2 weeks.
- 1 time per week for 1 week.
- No extra watering required.

Scan for gardening basics and how-to videos on planting, weeding and more!

