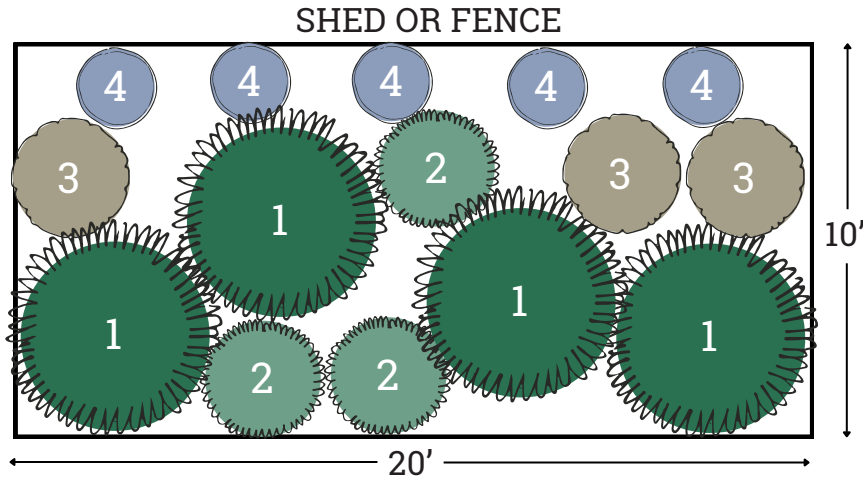


# Plant by Numbers



## Cottage Garden: Border for Shade

Create a whimsical garden with bountiful blooms against a shed or fence. Spacing shown is for fully grown plants. Click on plant names for more info on the species.



### Large Perennial

Pick 1 species and buy 4 plants.



[Plumbago](#)



### Small Perennial

Pick 1 species and buy 3 plants.

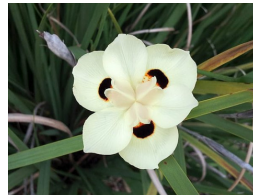


[Scarlet Sage](#)



### Small Perennial

Pick 1 species and buy 3 plants.



[Bicolor Iris](#)



### Vining Perennial

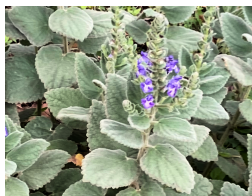
Buy 5 plants of this species.



[Cecile Brunner Rose](#)



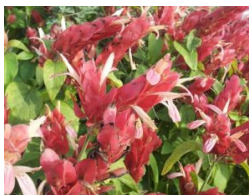
[Turk's Cap](#)



[Heartleaf Skullcap](#)



[Inland Sea Oats](#)



[Shrimp Plant](#)

## Want \$125 for these plants?

This design is eligible for one WaterSaver Landscape Coupon if you remove 200 square feet of grass. Apply today at [GardenStyleSA.com/coupons](http://GardenStyleSA.com/coupons) for \$125 off the cost of 15 plants.

# Quick Tips on Maintenance

Mulch 2 inches deep using 16 bags of 2-cubic-foot wood mulch.



## Plumbago

- Prune to shape if desired.
- Appreciates occasional water.



## Heartleaf Skullcap

- Cut back as needed in early spring.
- No extra watering required.



## Turk's Cap

- Edible flowers and fruits.
- Drops leaves in winter.
- No extra watering required.



## Bicolor Iris

- Cut back in late winter if desired.
- No extra watering required.



## Shrimp Plant

- Spreads easily.
- Cut back if desired in late winter.
- No extra watering required.



## Inland Sea Oats

- Cut back in late winter if desired.
- No extra watering required.



## Scarlet Sage

- Cut back as needed in early spring.
- Appreciates occasional water.



## Cecile Brunner Rose

- Tie to trellis to direct growth.
- Follow rose pruning practices.
- Appreciates occasional water.

### Watering Countdown To Establish New Plants

- 3 times per week for 3 weeks.
- 2 times per week for 2 weeks.
- 1 time per week for 1 week.
- No extra watering required.

Scan for gardening basics and how-to videos on planting, weeding and more!

